



# Webpace from GE Digital

Deliver advanced control and production execution over iPad, Android, and a Web browser

## Increase operator agility and effectiveness to improve business performance

Webpace from GE Digital offers an easy-to-use, full-featured Web and mobile client that enables you to extend, expand, and enhance your new or existing iFIX, CIMPLICITY, or Plant Applications system from GE Digital. It enables full control, visualization, and production execution capabilities over your company Intranet or secure Internet without the need to change or alter your software application and can be set up within minutes.

### Outcomes

- Increase information sharing across teams with a full-featured, secure-by-design Web and mobile client for iFIX, CIMPLICITY, and Plant Applications
- Speed the right actions with model-based navigation and quick access to information over the Internet, anywhere
- Save time with zero client configuration and the ability to port screens instantly
- Decrease costs with one server that renders three applications on your choice of client, including iOS, Android, and browser access
- Boost flexibility by dynamically adjusting control points on-the-fly and viewing multiple systems simultaneously
- Improve analytical and planning abilities with real-time data and information viewing

With Webpace, you can reduce costs, improve time to action, and expand analytic capability—driving sustainable advantages across all levels of your business, including management, operators, engineering, and IT levels.

## 01 Extend your HMI/SCADA and MES with the power of the Industrial Internet

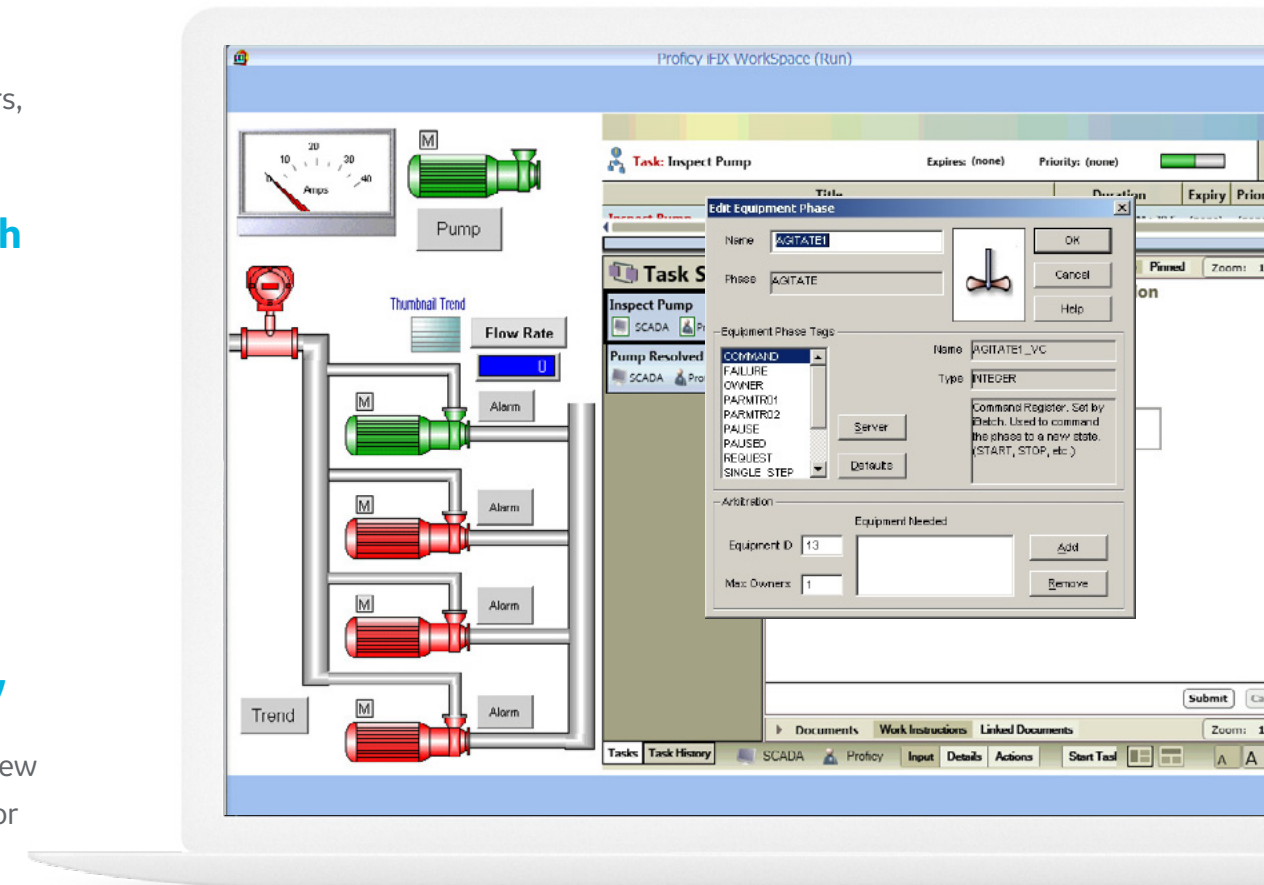
Webpace extends your iFIX, CIMPLICITY, and Plant Applications system viewing and control abilities right into a Web browser or tablet. Webpace doesn't compromise your proven applications, graphics, or functionality—providing a full-featured client and delivering comprehensive functionality over a browser.

## 02 Increase information sharing with flexible, secure-by-design technology

With support for up to 70 simultaneous clients, Webpace enables new and existing systems to be dynamically expanded across the facility or globe. The solution enhances your user experience with the ability to run multiple Webpace clients and view many systems from one point. Additionally, Webpace allows you to manually configure a sandbox and white list entries for files and programs.

## 03 Gain full-featured mobility with the SCADA app

Easily and quickly harness the power of your HMI/SCADA and Plant Applications on iPad or Android devices with minimal engineering effort. Download the free SCADA app and instantly connect to your runtime projects, and leverage the same full-featured capabilities of a standard client with full HMI/SCADA and Plant Applications functionality, including third-party app support with no screen conversions required.



Webpace extends your application viewing and control abilities right into a Web browser—without compromising features, graphics, or functionality.

*"There's a time savings, and it lowers the complexity of our system... they have all the features of the control room in their hands."*

**John D'Aoust, Plant Manager**  
City of Haverhill—Water Division



# Webspace from GE Digital

Deliver advanced control and production execution over iPad, Android, and a Web browser

## Features

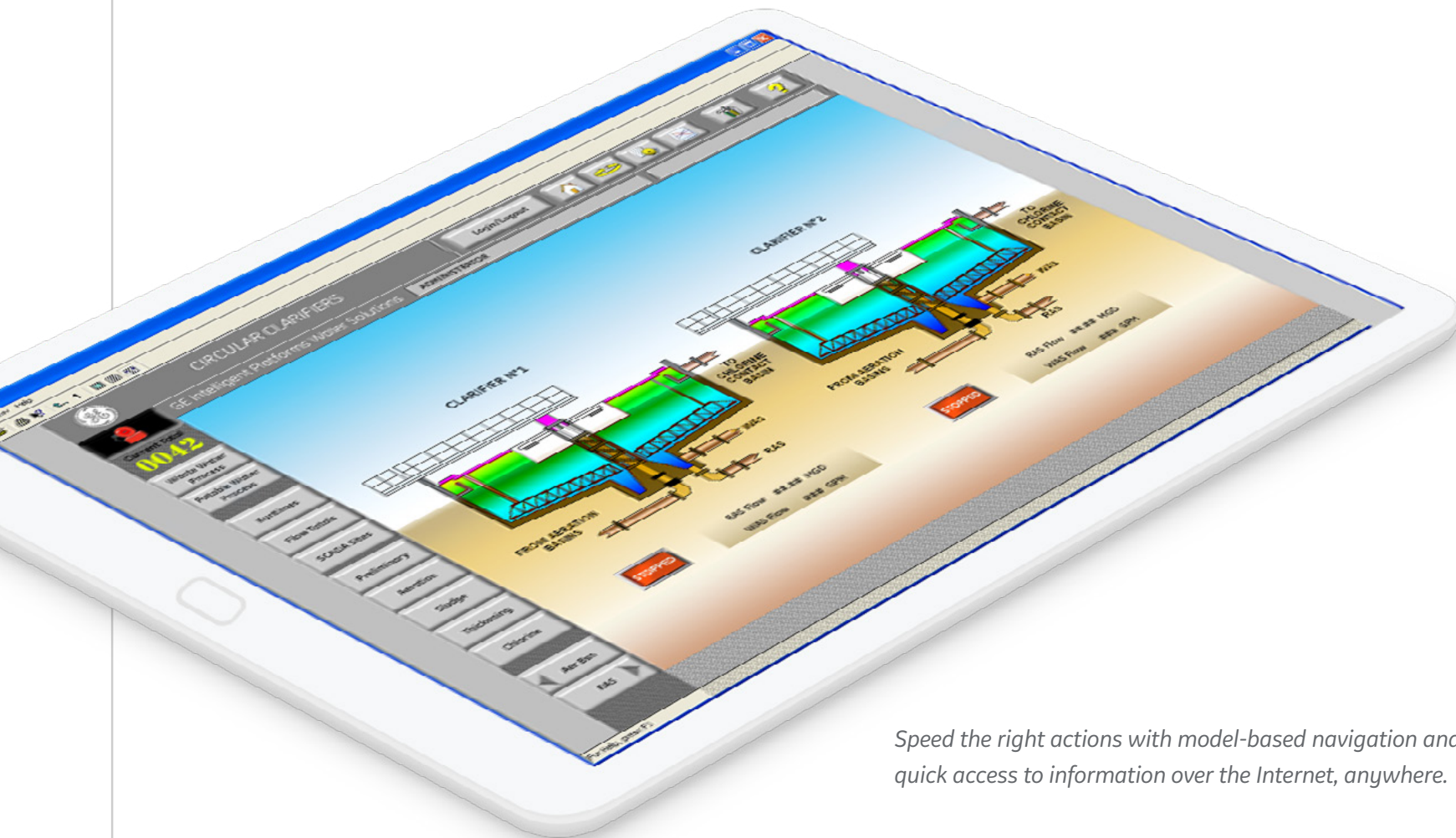
- Full-featured Web and mobile client for iFIX, CIMPLICITY, and Plant Applications—with one server and real-time data updates
- Zero client configuration, no third-party software required
- No restrictions on secure containment of third-party controls; launch third-party apps triggered in iFIX, CIMPLICITY, or Plant Applications; control elements operable within Webspace and inherit security setup
- External access over the Internet, multi-tab browser support, remote access for debug and support
- E-signature enhances security and audit trail
- Support displays with animations
- View, acknowledge, and silence alarms and warnings
- Administration: Client disconnect, client session shadowing, SSL 56 or 128 bit encryption, port selection, maximum client limit

## Software requirements

Webspace has many flexible configuration topologies and can be installed either on an independent dedicated server or your main application server.

- Server
  - Microsoft Windows Server 2012, Standard or Enterprise Edition
  - Microsoft Windows 8 (64-bit), Professional Edition
- Web browsers
  - Microsoft Windows Internet Explorer 7 or later
  - Mozilla Firefox version 17 or later
  - Google Chrome version 27 or later
- Web servers
  - Microsoft Internet Information Server (IIS) 7 or 8
  - Apache HTTP Server 2.x

Hardware and software requirements are representative and may vary by customer deployment. Please consult the product documentation for more details.



Speed the right actions with model-based navigation and quick access to information over the Internet, anywhere.

Speed response to HMI/SCADA and MES events and data by sharing information anywhere, anytime with Webspace for iPad, Android, and a browser.

LEARN MORE







# Webpace from GE Digital

Deliver advanced control and production execution over iPad, Android, and a Web browser

## Services

In the world of Industrial Internet of Things (IIoT), organizations are able to optimize productivity, reduce costs, and achieve Operational Excellence. While this is an exciting time for opportunity and growth, it can also bring on new challenges, questions, and uncertainty. No matter where you are on your IIoT journey, GE Digital has the right services offering for you.

[Advisory Services](#) We can help you plan and start your IIoT journey in a way that aligns to your specific business outcomes.

[Managed Services](#) We can help you maintain your critical machines from one of our remote locations around the world using model-based predictive-analytic technology.

[Implementation Services](#) Our experienced global Automation partners can implement a collaborative, multi-generational program that marries your existing investments to the right enhancements and technology.

[Education Services](#) We specialize in education services to ensure that you're leveraging our solutions to the fullest extent with our training and certificate programs.

[GlobalCare Support Services](#) Let us help by ensuring that your business continues to operate at its highest efficiency, all while mitigating risks to your investments.

[Worldtech Security Services](#) Our solutions provide industrial-grade security for a wide range of OT network and application topologies.

## Related products

GE Digital's [HMI and SCADA](#) helps you precisely monitor, control, and visualize every aspect of your operations, enabling operators to make the best decisions faster.



# PREDIX

### [iFIX](#) →

Gain visibility into your operations and secure agility for smarter decision making that drives results.

### [CIMPLICITY](#) →

Drive real-time visibility for smart operators with true client-server-based visualization and control.

### [Predix](#) →

Innovate and transform your business with the cloud-based operating system for the Industrial Internet, purpose-built for industry.

## Continue your IIoT journey

Transforming your business requires innovative foundational solutions that lay the groundwork for optimized performance.



### [Mobile](#) →

Take industrial automation to a new level, transforming operational data into actionable information, accessible anywhere, anytime.



### [Workflow](#) →

Guide operators with dynamic, interactive electronic work instructions and eSOPs for more consistent operations and optimized processes.



### [Historian](#) →

Optimize asset and plant performance through time-series industrial data collection and aggregation, leveraging Predix IIoT connectivity.

#### About GE

GE (NYSE: GE) is the world's Digital Industrial Company, transforming industry with software-defined machines and solutions that are connected, responsive and predictive. GE is organized around a global exchange of knowledge, the "GE Store," through which each business shares and accesses the same technology, markets, structure and intellect. Each invention further fuels innovation and application across our industrial sectors. With people, services, technology and scale, GE delivers better outcomes for customers by speaking the language of industry.

©2016 General Electric. All rights reserved. \*Trademark of General Electric. All other brands or names are property of their respective holders. Specifications are subject to change without notice. 01 2017

#### Contact

Americas: 1-855-YOUR1GE (1-855-968-7143)  
gedigital@ge.com  
[www.ge.com/digital](http://www.ge.com/digital)